



SINCE 1976

**RAMET**



רמת טרום בע"מ TROM LTD

**JUST ON TIME**

## About the company

Ramet Trom is the leading and largest company in the field of manufacturing and supply of precast elements for the building and infrastructure sector. For more than 50 years, the Company has been engaged in the design, manufacture, supply and installation of precast elements for the building and infrastructure sector for residential projects, logistic centers, office buildings, prestressed beams for buildings and bridges, and unique protection solutions for the Ministry of Defense.

The products produced by the Company include, among other things, stone clad industrial walls, with architectural concrete finish, textures customized to specific project requirements, prestressed beams, precast beams, prestressed hollow core slabs for buildings and bridges, tribunes for playing fields and stadiums, and protection solutions for the Ministry of Defense, ducts, conduits, manholes and communication vaults.

The Company's precast element production plant is located in Mishor Adumim. The plant employs engineers, practical engineers, quality controllers and production workers.

The Company has a diverse product line, combining all precast building products to offer a one-stop shop solution. The Company boasts the largest production capacity in the market. The Ramet Trom Company is owned by the Ami foundation, and the Yoseph family. The Company's CEO is Roi Vilenski.

Ramet Trom has a Contractor Department, with an unlimited C-5 classification, that operates in the fields of public and private projects (schools, day-care centers, kindergartens, youth centers, office buildings and more) and with private entrepreneurs.

---



# Table of contents

Precast walls for residence	6
Prestressed beams	14
Columns	19
Precast building and special elements	24
Prestressed hollow core slabs	28
Protection solutions	33
Tunneling	40

---



# Precast walls for residential projects

**Precast walls with integral porcelain and Dekton cladding.  
Dimensions and sizes are as specified by the architect.**



Project: Feel Gadera  
Entrepreneur: Efi Capital and  
Mishkenot Barel  
Performance: Barel Engineering  
34 buildings, about 450 housing units.



Ramet Trom specializes in the manufacture of precast load bearing walls, offering a solution for buildings of 35 stories and up. The Company maintains direct contact with its customers throughout the process, and provides ongoing support, with an experience of many years in precast building. The Company offers consultation on the conversion of projects that were not originally designed by the precast method into projects built using load bearing walls, utilizing advanced precast systems.



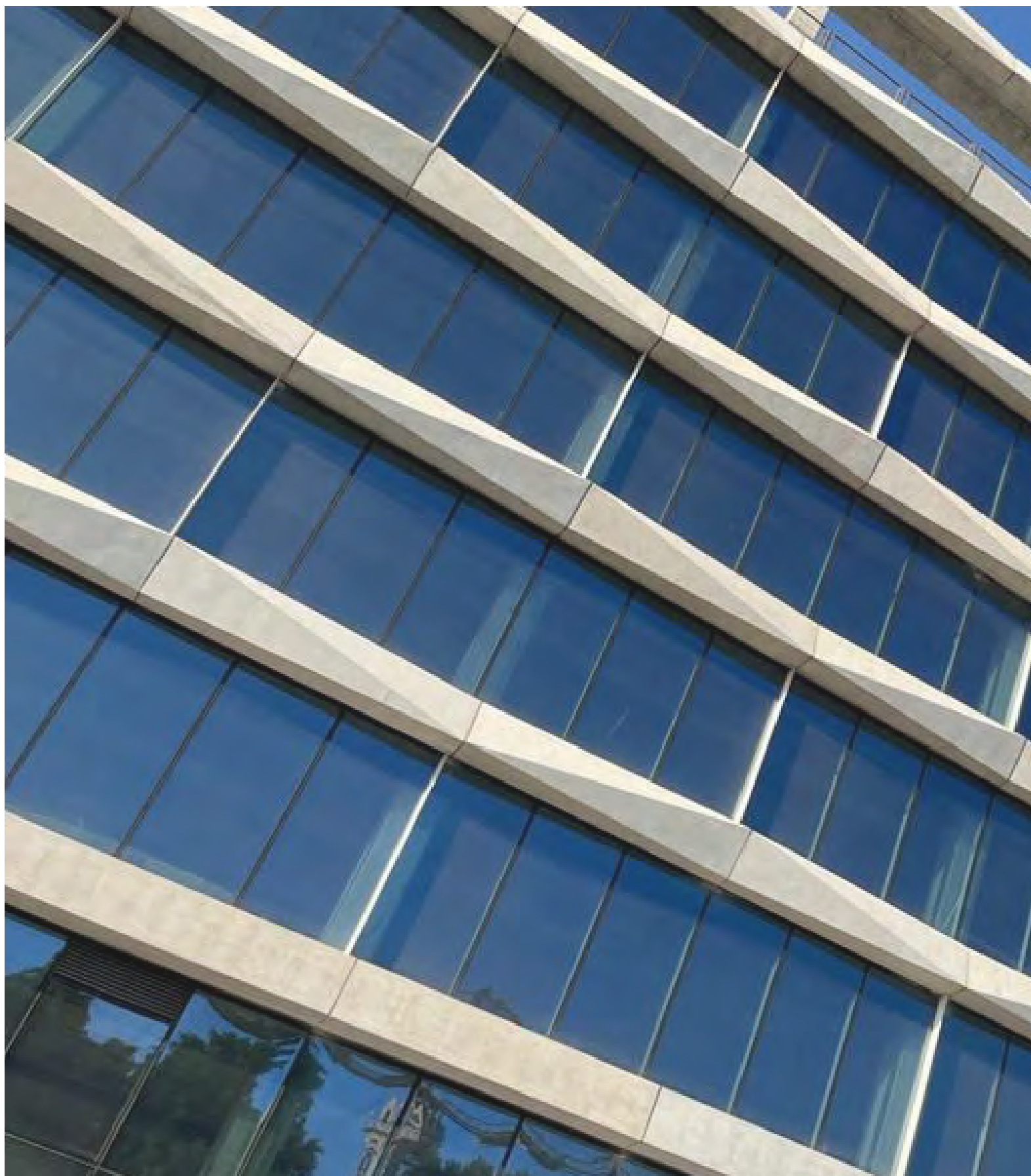
Project: Umami – Kiryat Ono  
Entrepreneur: Carasso Real Estate  
6 buildings of 33 floors each.  
About 742 housing units.



**Protected space walls.**

Ramet Tron provides precast building solutions complying with safety and defense standards.

## White cement based spatial architectural beams





White cement based 3-dimensional architectural beams.  
Operating contractor: BST.  
Olivax project, Petach Tikwa.

## Spatial architectural facades



Gav Yam project  
3-dimensional architectural  
facades.  
Operating contractor: BST  
Architect: Avner Yashar.



### **Walls with architectural finish**

Ramet Trom manufactures walls with architectural finish using customized forms, including smooth forms to achieve special textured finishes and others. The Company manufactures precast walls with architectural finish for a wide variety of projects.

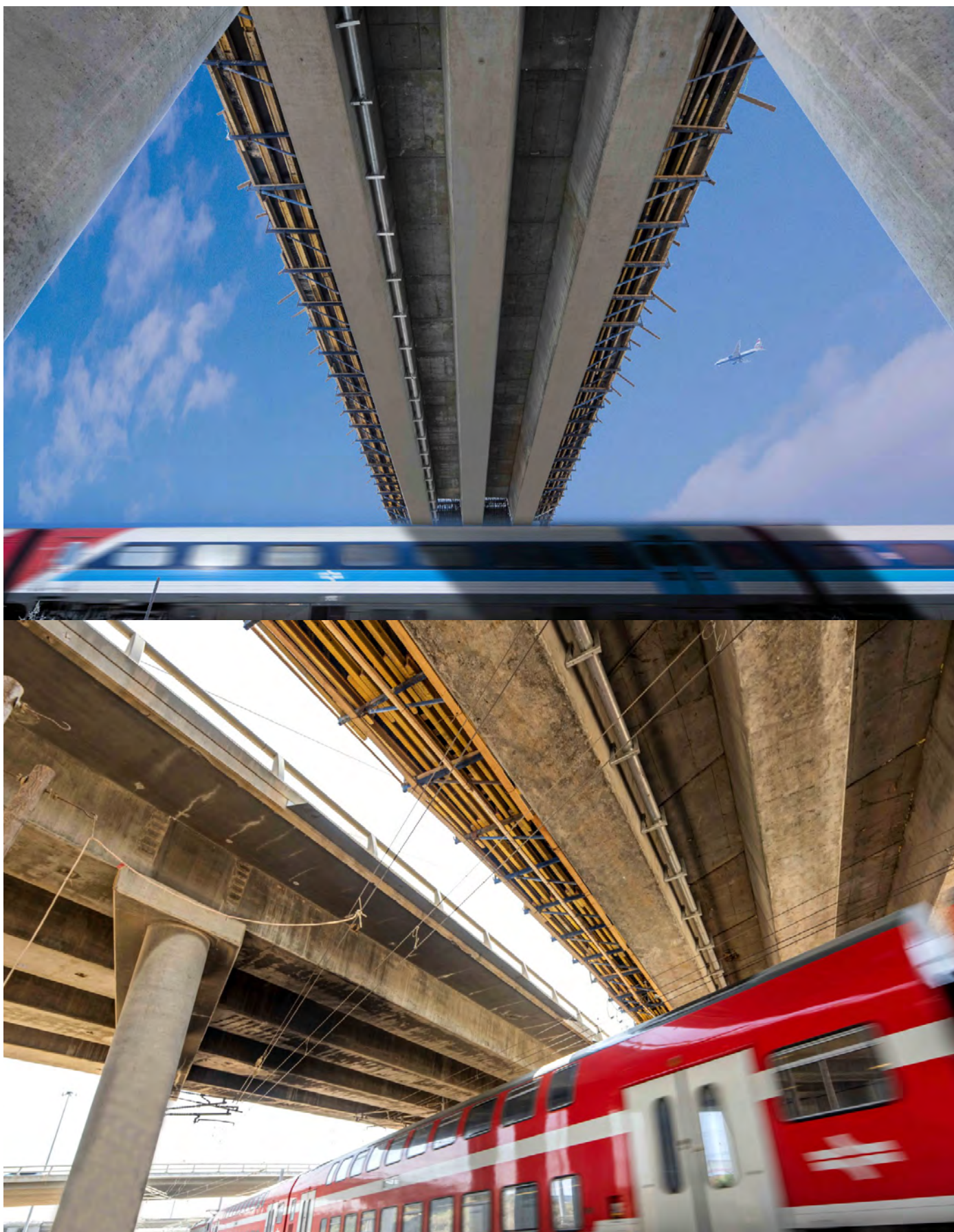


# Prestressed beams

## Prestressed beams, bridges and parking lots



Project: bus parking lot  
Operating contractor: Danya Cebus  
Site: Jerusalem.





## Prestressed beams, bridges and parking lots



Prestressed beams use allow to reduce the cross-sections of members and the weight applied to the building (vs. conventional beams).



Fast parking lots in Shfayim.  
Operating contractor: Danya Sebus  
Constructor: Yossi Shiran.



# Columns



Ramet Tron specializes in the design and manufacture of tall precast concrete columns of up to 20-m and more, of variable cross-sections. The columns are manufactured in accordance with the customer's instructions, according to their needs and the building's purpose: swimming pools, stadiums, logistic and public centers, offices, water desalination plants and many other applications.



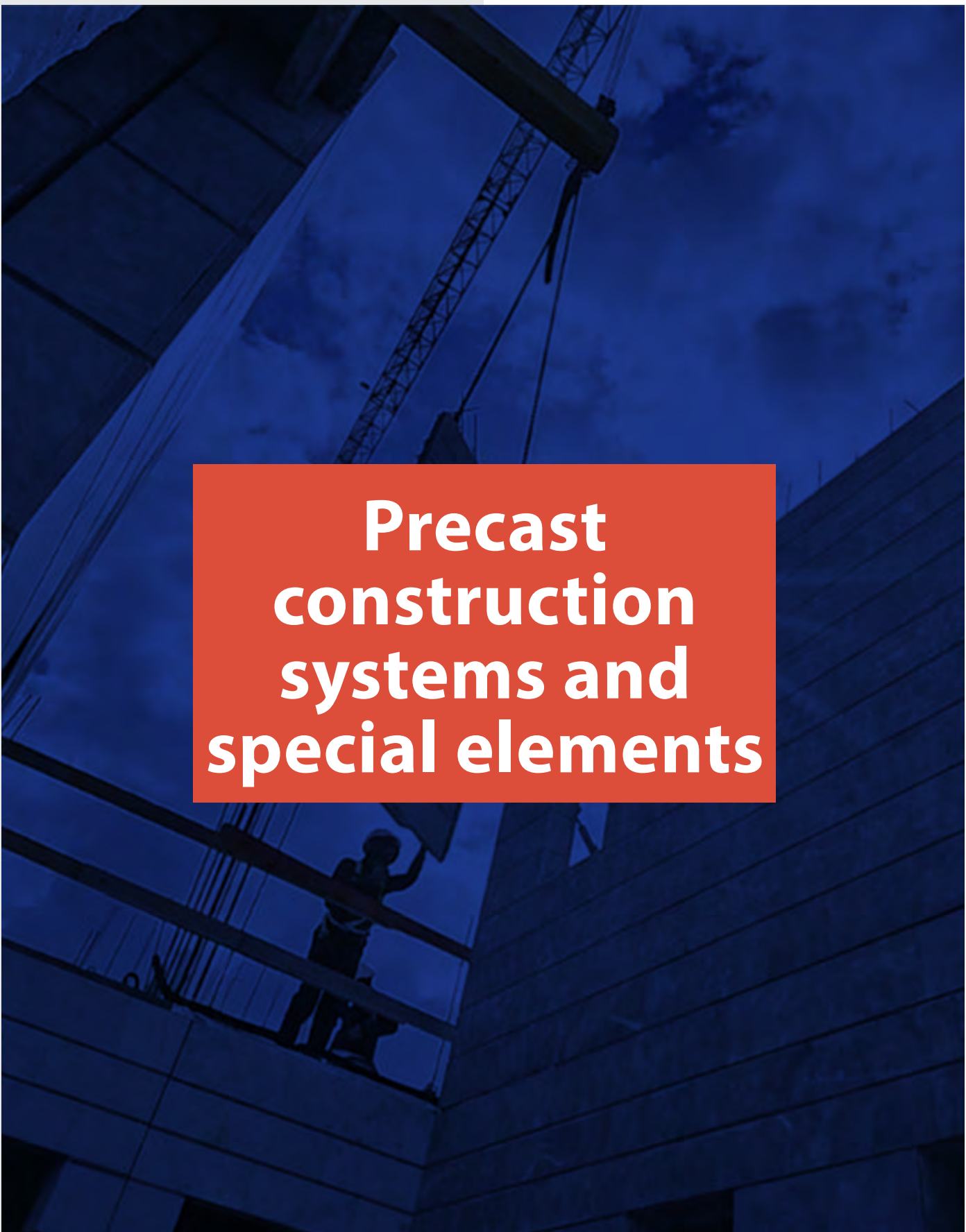
Project: Techno Park – Holon  
 Operating contractor: Omer Engineering  
 Constructor: Shmuel Angle







Project: Trigger-It, Beit Shemesh  
Operating contractor: Shamir  
Engineering  
Constructor: David Blank



# Precast construction systems and special elements





Precast construction is an advanced, innovative construction method, allowing a wide range of advantages and benefits for the operating contractor, entrepreneur and residents, including those who live nearby the construction sites, and the Local Authority that the project in question is built in its municipal territory.

The main benefits offered by the precast construction method are a wide range of solutions for multi- residential building projects, public institutions, logistic centers, commercial buildings, office buildings, industrial buildings, infrastructures, security facilities and more,

## No need for staging areas on site



Precast construction sites are well planned, neat and clean.

The elements are handled to the site on trucks equipped with dedicated devices.

## Order and organization of the site



Precast construction allows to maintain a well-planned, neat and orderly construction site. Therefore, the time required to complete frameworks can be significantly reduced, as the assembly of precast elements and members is conducted in advance.

## The precast elements are manufactured by a plant that specializes in precast concrete construction methods



The manufacture of precast elements by dedicated plants offers numerous advantages to the operating contractor and/or entrepreneur (the customer). Firstly, the manufacturing process is conducted using customized precision steel forms, allowing to manufacture a high volume of elements of various types (according to the project's requirements).

## A high pace of work and reliance on a small skilled staff



The high pace of work in a project that is based on precast elements allows to complete about 2.5-3 floors in a month, in a multi-residential building project (a pace that is twice that of any other construction method).

## Installation in advance of fittings and preparations for finish works



The use of precast concrete components facilitates maintaining a tidy, safe and clean construction site. Moreover, the time it takes to complete the frameworks becomes significantly shorter, as the assembly method of elements is decided in advance.



# Prestressed hollow core slabs



Ramet Trom is the largest company in Israel in the field of prestressed hollow core slabs. The Company's plants operate 24/7 and are equipped with high-tech production lines, with an annual production capacity of about 400,000 prestressed hollow core slabs.







Remet Trom offers transport and assembly services, as well as self-transport and/or supply by the customer, under their responsibility.





# Protection



The Company's capabilities, as a leading company in the industry of precast elements and infrastructures in Israel, include manufacture of various infrastructure products, including Bezeq and multi-tubular chambers, conduits, water culverts, precast ducts, pillars, cornices, foundations for lighting poles etc.

## Moovable Room shelters (MAMADs)



Moovable Room shelters are designed to safeguard against a wide spectrum of threats, including rocket, missile, and earthquake protection.

Moreover, the time to reach a Moovable Room shelters is shorter than the time it usually takes to reach a shelter – whether public or another. Moreover, a protected space is usually maintained at a higher level, since it is part of an apartment, floor, building or public institution.



Transportable Moovable Room shelters approved by the Home Front Command provide a protection solution equivalent to that manufactured on site, therefore they offer a valid alternative, when a protection solution is required.



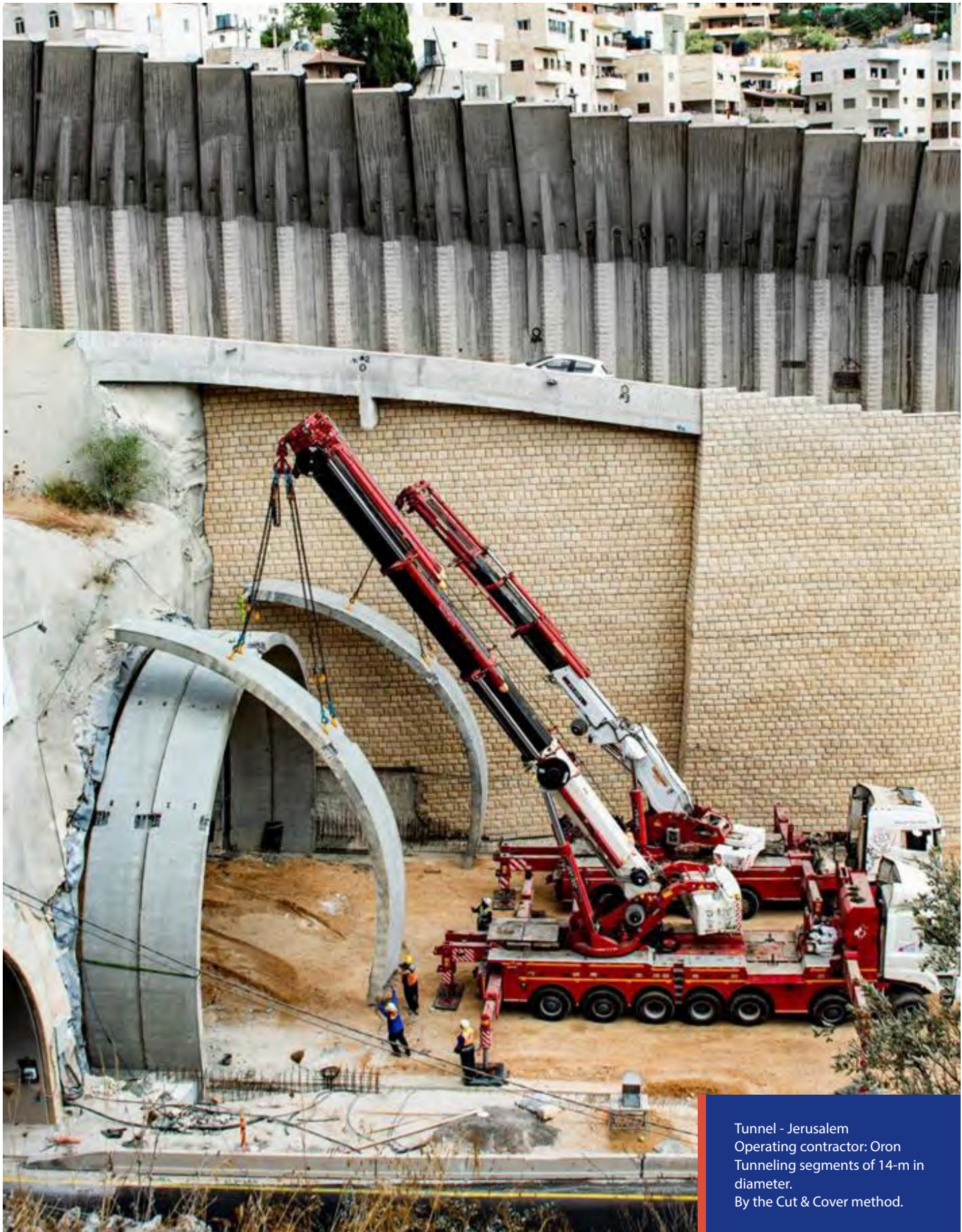


## Room shelters against direct hit



# Tunneling





Tunnel - Jerusalem  
Operating contractor: Oron  
Tunneling segments of 14-m in  
diameter.  
By the Cut & Cover method.









# Special elements

## Beams and Tribuns for stadiums





SINCE 1976

**RAMET**



רמת טרום בע"מ TROM LTD

**JUST ON TIME**





**JUST ON TIME**



Address: 33 Haugda, Mishor Edomim

Tel: 02-5352660 Fax: 02-5900098

**RAMET-TROM.CO.IL**